

West Shore School District



Options Review

January 12, 2017



OUTLINE

- I. Schedule
- II. Educational Specifications
- III. Existing Facilities Recap
- IV. Review of Options
- V. Board Recommendations and Discussion
- VI. Next Steps

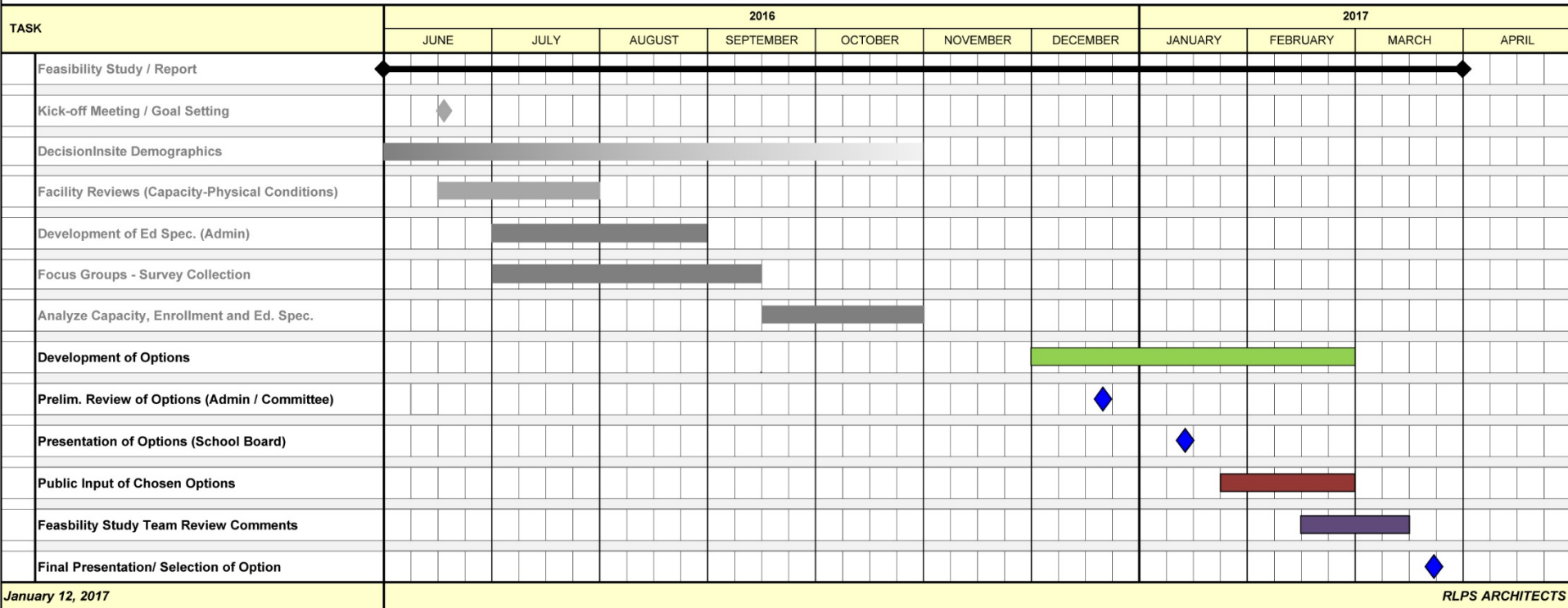


I.

SCHEDULE

- ✓ To date
- ✓ Goals
- ✓ Presentations

West Shore School District Feasibility Study Schedule





II.

EDUCATIONAL SPECIFICATIONS

- ✓ Curriculum
- ✓ Physical Environment
- ✓ Building Size
- ✓ Amenities
- ✓ Grade Configuration
- ✓ Enrollment

A 3D graphic featuring a bar chart with several blue bars of varying heights and a pie chart with a single slice highlighted in a lighter blue. The charts are positioned on a light blue, textured surface that resembles a document or a set of papers.

INFORMATION COLLECTION

- Survey Monkey Input & Review
 - Student
 - Faculty
 - Community
- Feasibility Study Team Review
- Focus Groups
 - Elementary Faculty
 - Secondary Faculty
 - Administration



Budget and Resources

- Efficiency and Cost Savings
- Alignment to District and School Plans
- Return on Investment



Community Partnerships

- Community Engagement and Outreach
- District Brand - *Excellence*



Use of Space and Time

- Flexible Learning; Anytime, Anywhere
- New Pedagogy, Schedules, and Learning Environment for Personalized Learning
- Providing Extended Time for Projects and Collaboration

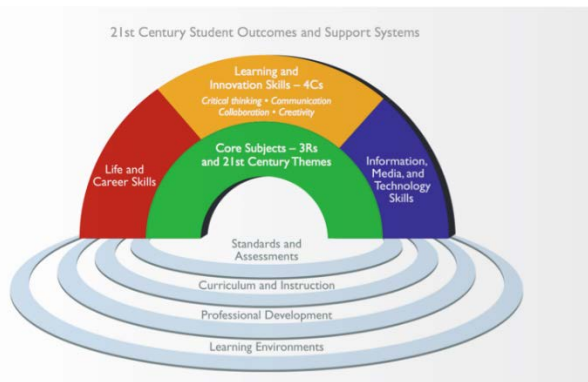


Curriculum & Instruction

- 21st Century Skills/Deeper Learning
- Personalized Learning
- Collaborative, Relevant, and Applied Learning



The Partnership for 21st Century Skills has developed a vision for student success in the new global economy.





III.

EXISTING FACILITIES RECAP



WEST SHORE SCHOOL DISTRICT - EXISTING BUILDING ANALYSIS

	Level of Need	School Name	ACREAGE	PLANNED CAPACITY	ACTUAL ENROLLMENT	BUILDING CONDITION	SYSTEMS CONDITION	AC/ NO AC
ELEMENTARY SCHOOLS								
	1	Fairview ES	33 acres	276	229	FAIR	POOR	NO
	1	Fishing Creek ES	26.5 acres	552	467	POOR	POOR	NO
	3	Highland ES	10 acres	414	469	GOOD	GOOD	YES
	3	Hillside ES	18.5 acres	552	588	GOOD	GOOD	YES
	1	Lower Allen ES	6.6 acres	276	196	POOR	POOR	NO
	1	Newberry ES	32.1 acres	414	346	POOR	POOR	NO
	2+	Red Mill ES	41 acres	690	585	GOOD	FAIR	YES
	1	Rossmoyne ES	14.2 acres	276	217	FAIR	POOR	NO
	3	Washington Heights ES	5.2 acres	414	420	GOOD	GOOD	YES
	TOTAL CAPACITY			3864	3517			
MIDDLE SCHOOLS								
	2	Allen MS	53 acres	528	562	FAIR	POOR	PARTIAL
	2+	Crossroads MS	30 acres	646	687	GOOD	FAIR	YES
	N/A	Leymoyn MS	3.5 acres	0	0	-	-	-
	1	New Cumberland MS	3.5 acres	594	635	POOR	POOR	PARTIAL
	TOTAL CAPACITY			1768	1884			
HIGH SCHOOLS								
	3*	Cedar Cliff HS	39 acres	1580	1320	GOOD/ FAIR	GOOD/ FAIR*	YES*
	3	Red Land HS	85 acres	1490	1160	GOOD/ FAIR	GOOD/ FAIR	YES
	TOTAL CAPACITY			3070	2480			

* Assumes 2017 HVAC replacement

IV.

REVIEW OF OPTIONS



OPTION 1: Renovate

PLAN

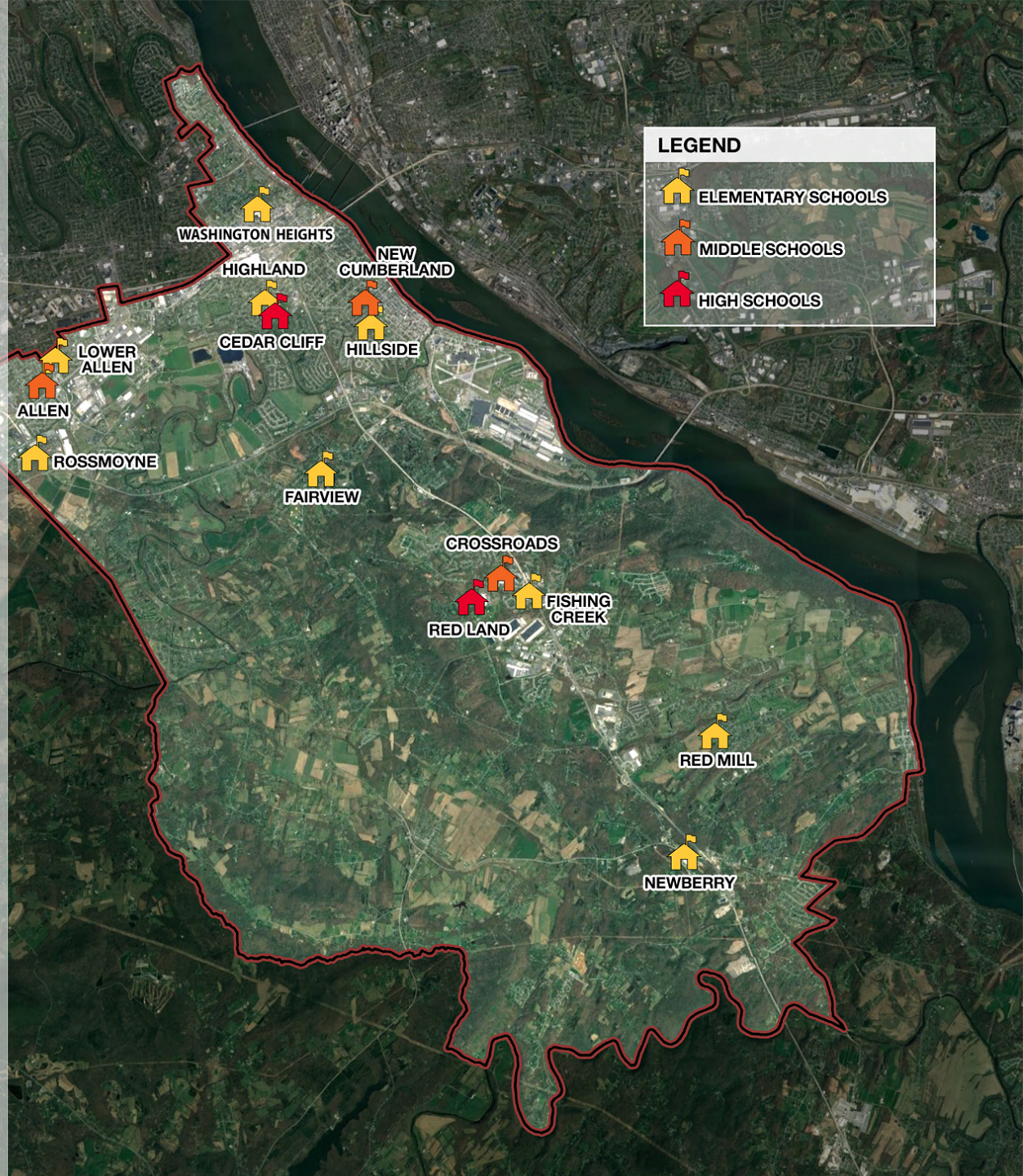
- Renovations (including MEP) throughout all buildings. Maintain all district buildings

BUILDING QUANTITY

- 9 Elementary Schools
- 3 Middle Schools
- 2 High Schools

GRADE CONFIGURATION

- E.S. = K-5
- M.S. = 6-8
- H.S. = 9-12



OPTION 2: Update

PLAN

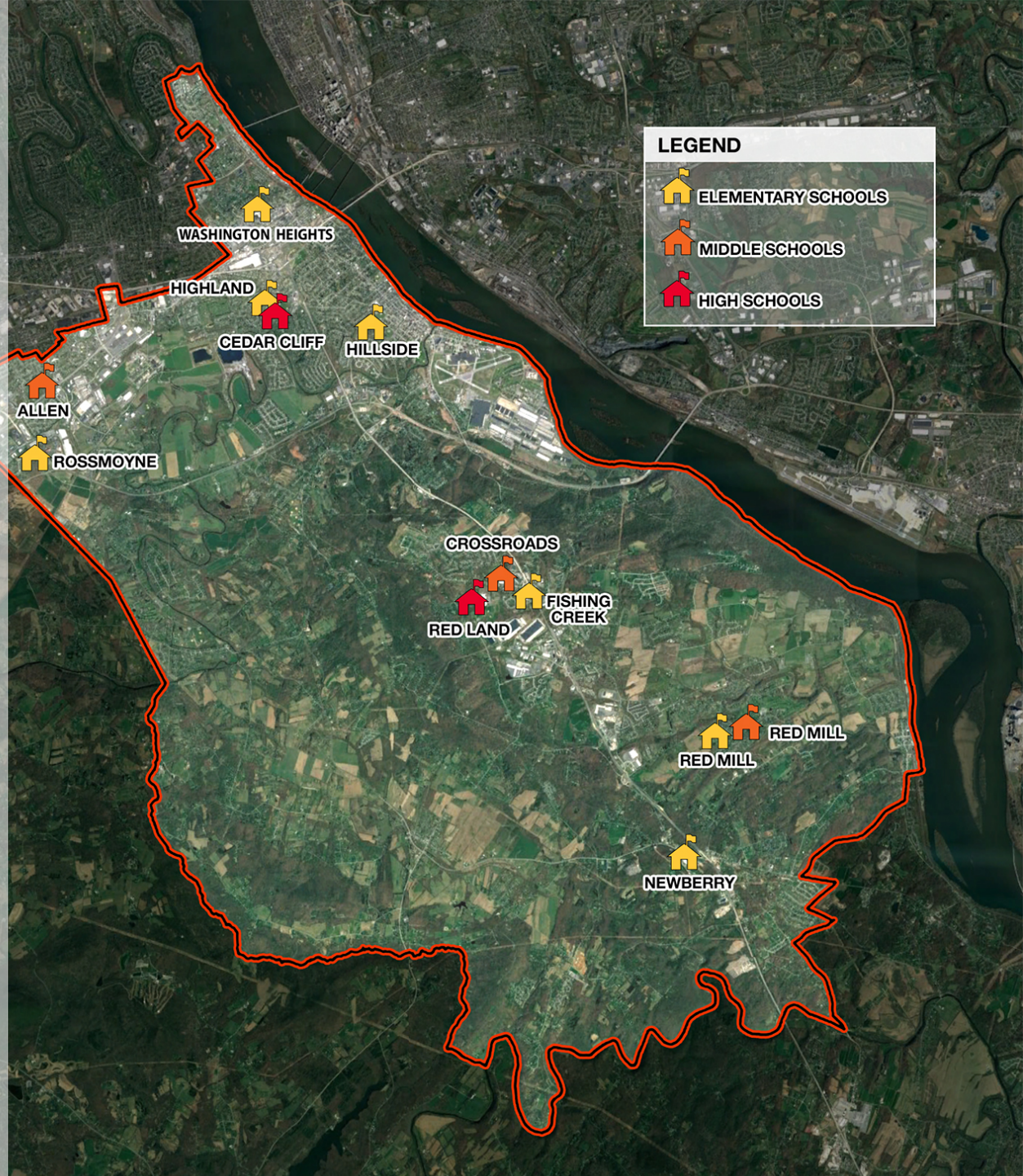
- Build 3 elementaries
- Build 1 middle school
- Add/ Renov. to Allen MS
- Renovations throughout remaining buildings

BUILDING QUANTITY

- 7 Elementary Schools
- 3 Middle Schools
- 2 High Schools

GRADE CONFIGURATION

- E.S. = K-5
- M.S. = 6-8
- H.S. = 9-12



LEGEND

-  ELEMENTARY SCHOOLS
-  MIDDLE SCHOOLS
-  HIGH SCHOOLS

OPTION 3: Campuses

PLAN

- Build 3 elementaries*
- Build 3 intermediates*
- Build 1 middle school
- Renovations throughout remaining buildings

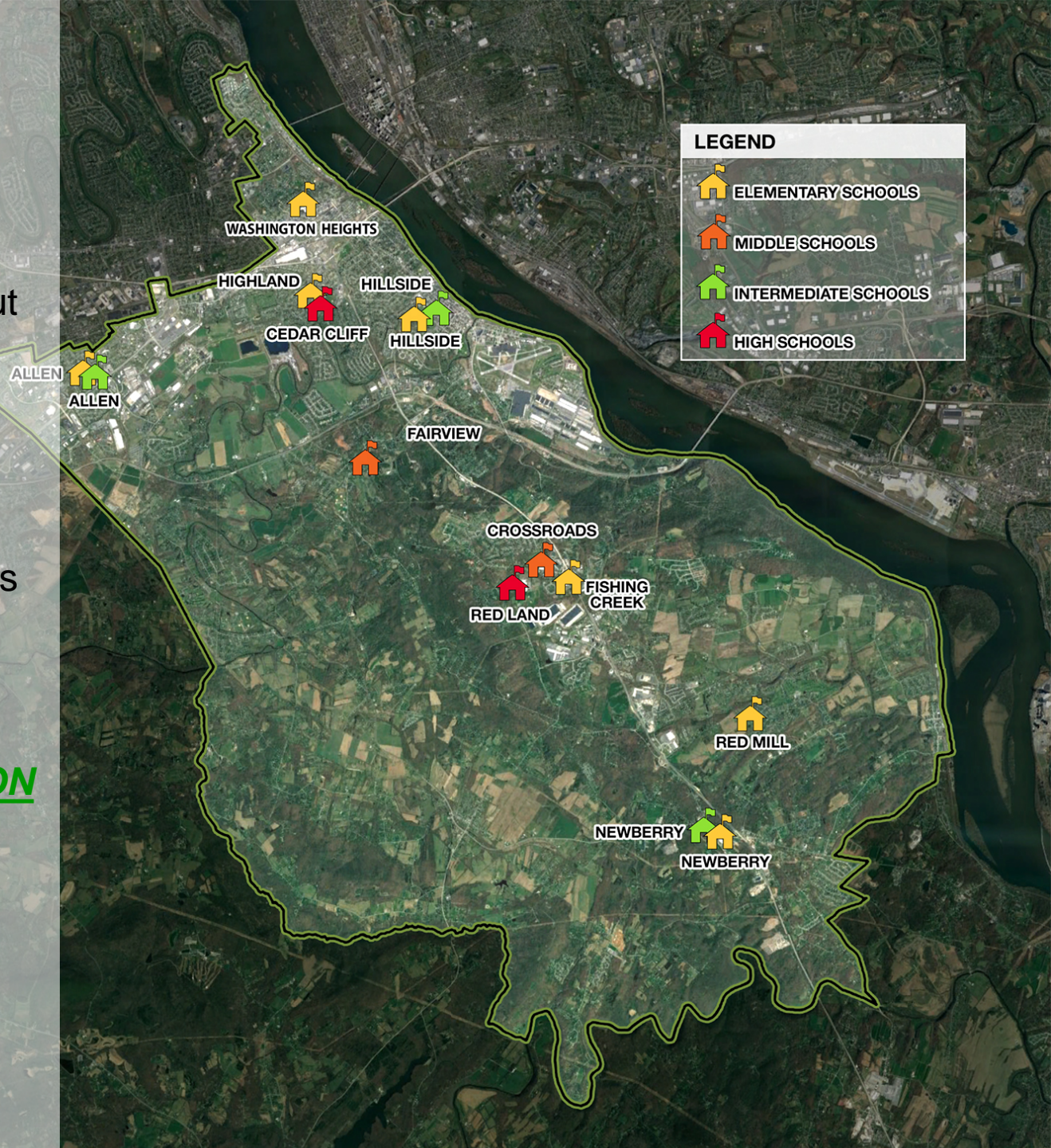
BUILDING QUANTITY

- 7* Elementary Schools
- 3* Intermediate Schools
- 2 Middle Schools
- 2 High Schools

*Campus Concepts

GRADE CONFIGURATION

- E.S. = K-3
- I.S. = 4-6
- M.S. = 7-8
- H.S. = 9-12



OPTION 4: Modify

PLAN

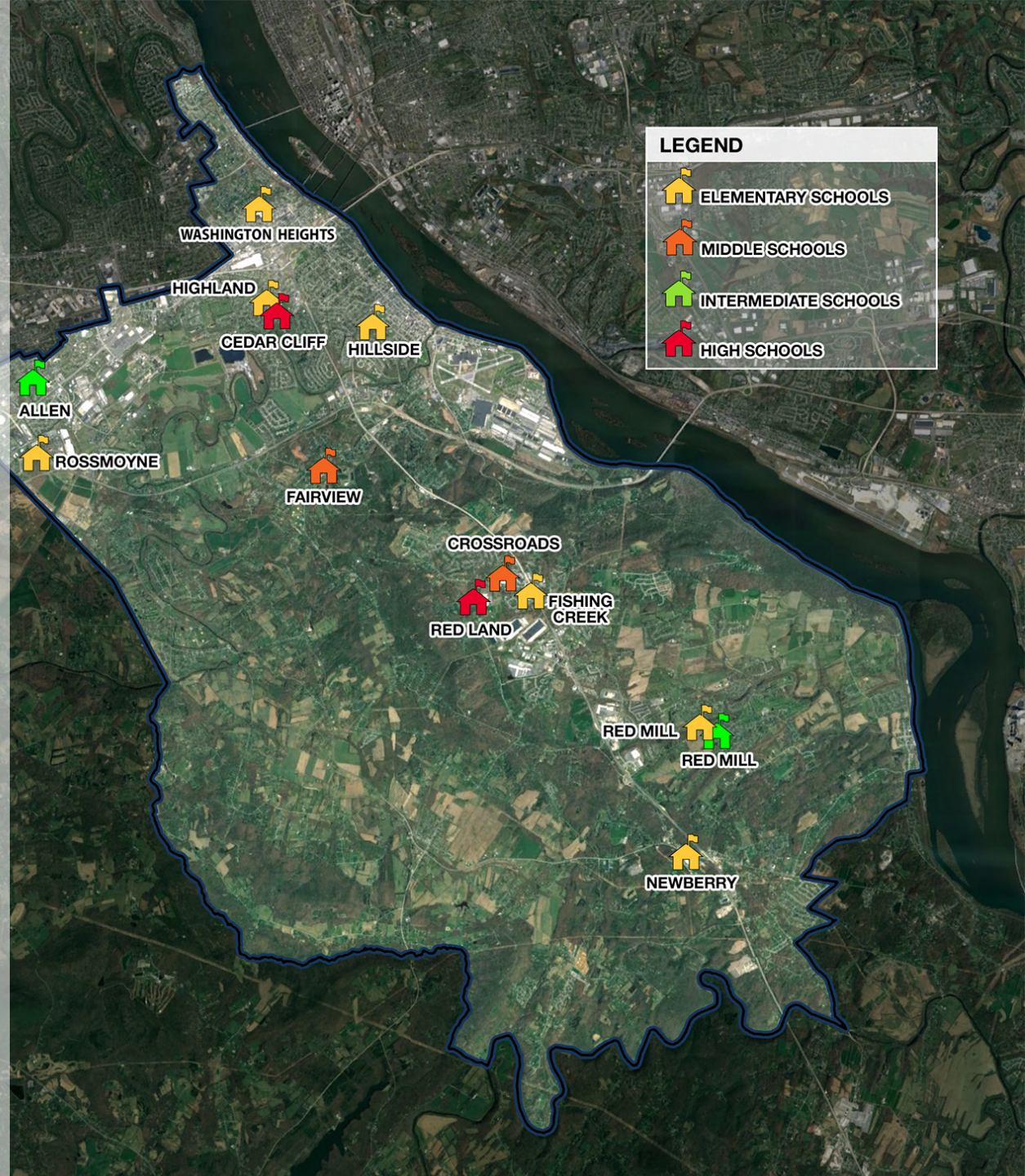
- Build 3 elementaries
- Build 1 intermediate
- Build 1 middle school
- Add/ Renov. to Allen MS
- Renovations throughout remaining buildings

BUILDING QUANTITY

- 7 Elementary Schools
- 2 Intermediate Schools
- 2 Middle Schools
- 2 High Schools

GRADE CONFIGURATION

- E.S. = K-4
- I.S. = 5-6
- M.S. = 7-8
- H.S. = 9-12



OPTION 5: Consolidate

PLAN

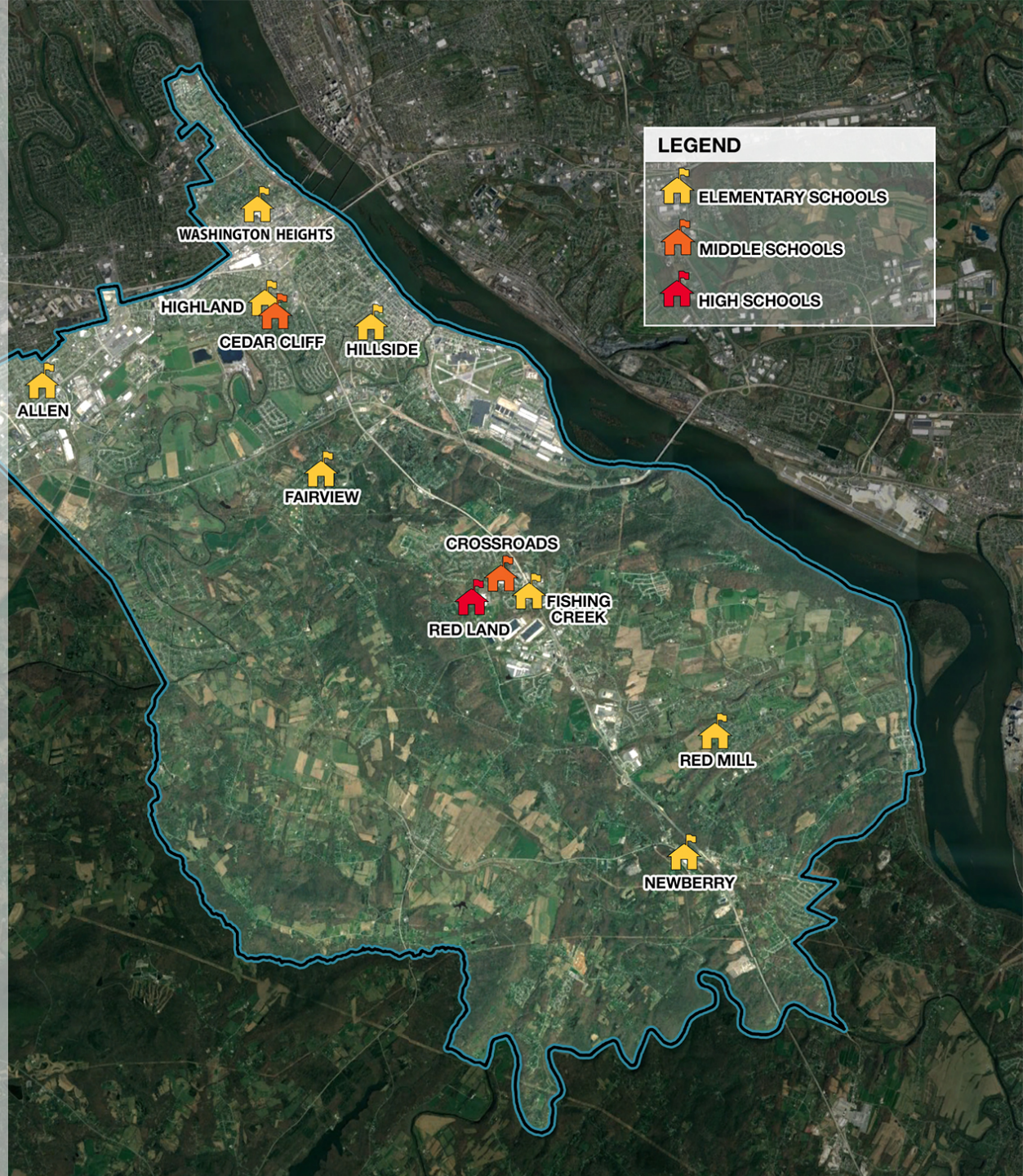
- Build 3 elementaries
- Convert Allen MS
- Renovate Crossroads MS
- Convert Cedar Cliff HS
- Add/ Renov. Red Land
- Renovations throughout remaining buildings

BUILDING QUANTITY

- 8 Elementary Schools
- 2 Middle Schools
- 1 High School

GRADE CONFIGURATION

- E.S. = K-5
- M.S. = 6-8
- H.S. = 9-12





V.

**BOARD
RECOMMENDATIONS
AND
DISCUSSION**



OPTION 1: Renovate

PLAN

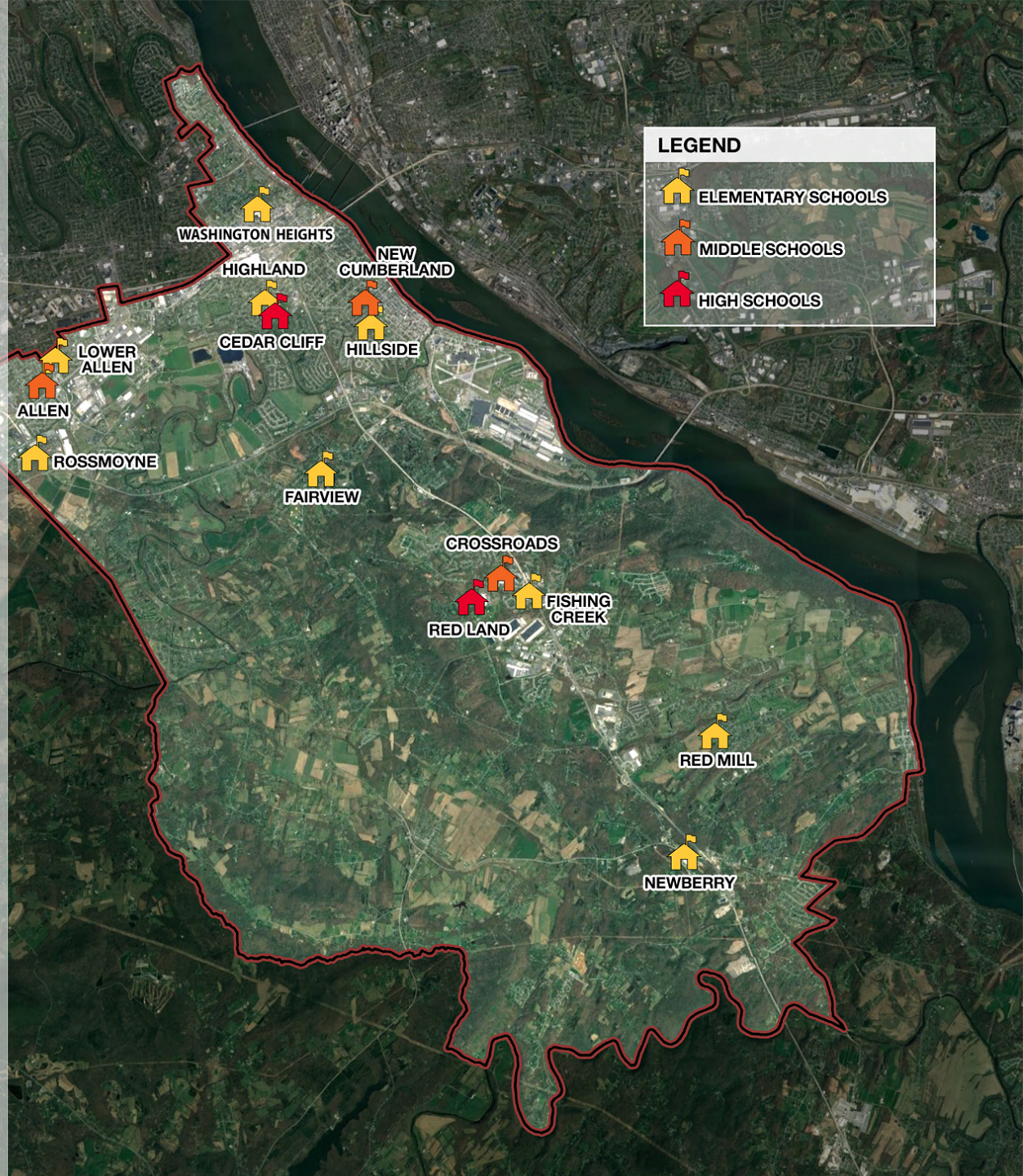
- Renovations (including MEP) throughout all buildings. Maintain all district buildings

BUILDING QUANTITY

- 9 Elementary Schools
- 3 Middle Schools
- 2 High Schools

GRADE CONFIGURATION

- E.S. = K-5
- M.S. = 6-8
- H.S. = 9-12



OPTION 1: Renovate

BUILDING SUMMARY		SCHOOL	GRADES	CAPACITY	ENROLL- MENT	LEVEL OF NEED
Option 1 - 14 schools						
	Renovations (including MEP) throughout all buildings. Maintain all district buildings	Fairview ES	K-5	276	229	HIGH
		Fishing Creek ES	K-5	552	467	HIGH
		Highland ES	K-5	414	469	LOW
		Hillside ES	K-5	552	588	LOW
		Lower Allen ES	K-2	276	196	HIGH
		Newberry ES	K-5	414	346	HIGH
		Red Mill ES	K-5	690	585	MEDIUM
		Rossmoyne ES	3-5	276	217	HIGH
Grade Configuration		Washington Heights ES	K-5	414	420	LOW
9 schools	E.S. (K-5); 3,597 proj. enrollment	K-5 Capacity		3,864	3,517	
3 schools	M.S. (6-8); 1,879 proj. enrollment	Allen MS	6-8	528	562	MEDIUM
2 schools	H.S. (9-12); 2,632 proj. enrollment	Crossroads MS	6-8	646	687	LOW
		Lemoyne MS	-	0		-
		New Cumberland MS	6-8	594	635	HIGH
		6-8 Capacity		1,768	1,884	
		Cedar Cliff HS	9-12	1,580	1,320	LOW
		Red Land HS	9-12	1,490	1,160	LOW
		9-12 Capacity		3,070	2,480	
					TOTAL	8,702

OPTION 1: Renovate

PROS

- Maintains current grade configuration
- Limits transitions
- Familiar to the community
- Existing capacity may be available with boundary changes

CONS

- Leaves a larger number of buildings than necessary to support student population
- Lacks spaces for 21st Century Teaching & Learning
- Structurally leaves the District with some buildings that are approaching 100 years old
- Keeps sister schools at LA/RS which pose logistical and administrative challenges
- Existing newer buildings (HG,HS,WH) cannot support changing student populations
- Continues programmatic challenges with 2 high schools
- Every building has to work through the logistics of a renovation project

OPTION 2: Update

PLAN

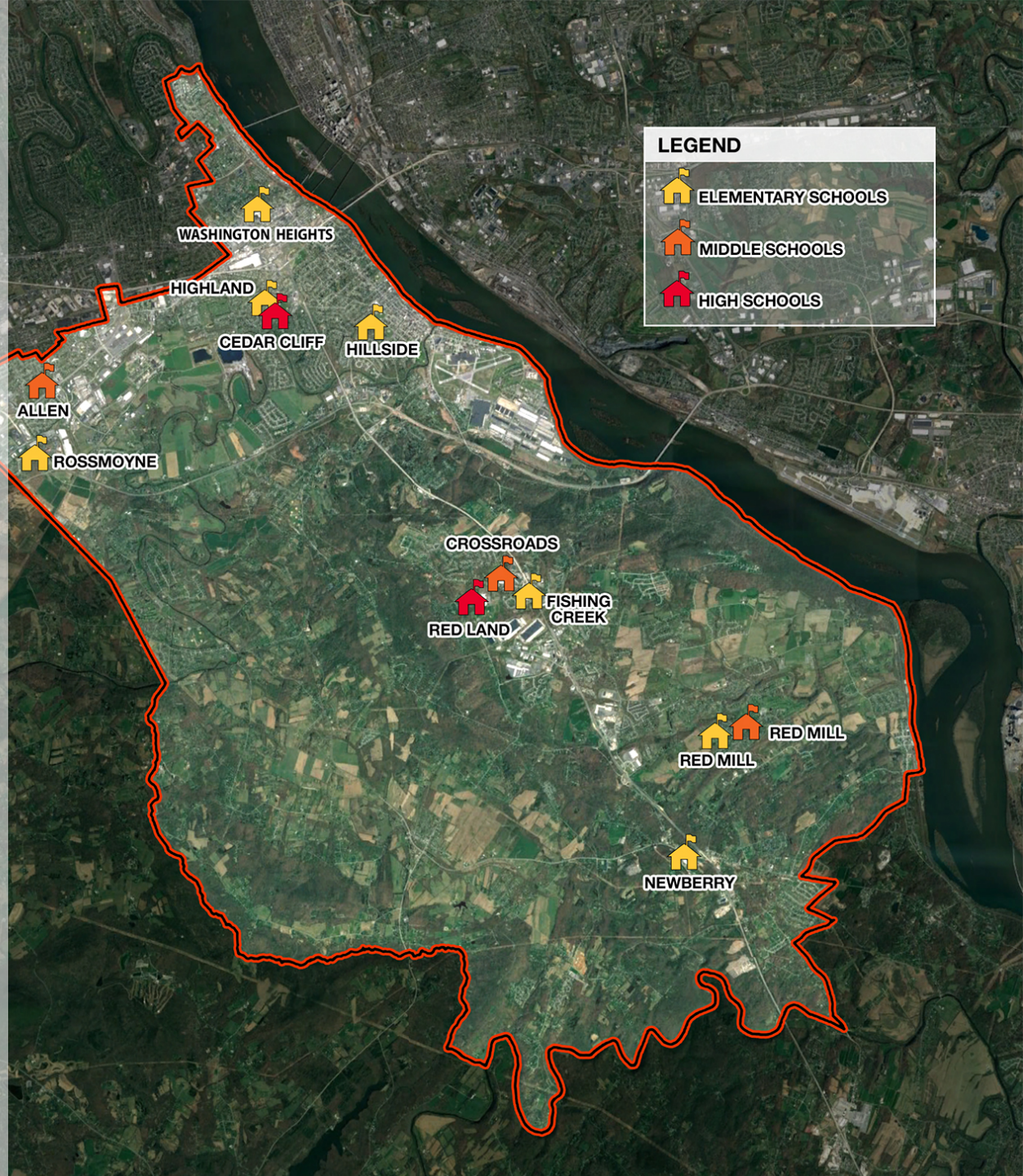
- Build 3 elementaries
- Build 1 middle school
- Add/ Renov. to Allen MS
- Renovations throughout remaining buildings

BUILDING QUANTITY

- 7 Elementary Schools
- 3 Middle Schools
- 2 High Schools

GRADE CONFIGURATION

- E.S. = K-5
- M.S. = 6-8
- H.S. = 9-12



OPTION 2: Update

BUILDING SUMMARY		SCHOOL	GRADES	CAPACITY	ENROLL- MENT	LEVEL OF NEED
Option 2 - 12 schools						
1 Build 3 elementary schools 2 Build 1 middle school 3 Add/ Renovate Allen MS 4 Renovate throughout remaining buildings		Fairview ES	Close	0	0	-
		Fishing Creek ES	Close	0	0	-
		New ES @ Fishing Creek	K-5	828	729	HIGH
		Highland ES	K-5	414	396	LOW
		Hillside ES	K-5	552	467	LOW
		Lower Allen ES	Close	0	0	-
		Newberry ES	Close	0	0	-
		New ES @ Newberry*	K-5	552	504	HIGH
		Red Mill ES	K-5	552	489	MEDIUM
		Rossmoyne ES	Close	0	0	-
		New ES @ Rossmoyne	K-5	552	505	HIGH
		Washington Heights ES	K-5	414	393	LOW
	Grade Configuration		K-5 Capacity		3,864	3,483
7 schools	E.S. (K-5); 3,597 proj. enrollment	Add/ Renov. @ Allen MS	6-8	724	668	MEDIUM
3 schools	M.S. (6-8); 1,879 proj. enrollment	Crossroads MS	6-8	646	660	LOW
2 schools	H.S. (9-12); 2,632 proj. enrollment	Lemoyne MS	-	0	0	-
		New Cumberland MS	Close	0	0	-
		New MS @ Red Mill*	6-8	568	495	HIGH
		6-8 Capacity		1,938	1,823	
		Cedar Cliff HS	9-12	1,580	1,224	LOW
		Red Land HS	9-12	1,490	1,167	LOW
		9-12 Capacity		3,070	2,391	
			TOTAL	8,872	7,697	

OPTION 2: Update

PROS

- Maintains current grade configuration
- Limits transitions, Familiar to the community
- Eliminates 2 buildings
- Creates feeder system and does not split elementary students
- Buildings can be staffed with existing administration
- Capacity at Red Mill could absorb future expansion at South end of the District
- Could be phased to prioritize relief in area of greatest need – New Cumberland MS
- Smaller more manageable construction projects

CONS

- Elementary schools are at the upper limits for student population (500) that can be supported with one administrator
- Challenges with opening space in existing schools to implement 21st Century Learning
- Space limitations could impact programming particularly at existing elementary buildings
- CMS is at capacity
- Poses challenges for program expansion/delivery at secondary level by maintaining 3 middle schools and 2 high schools.

OPTION 3: Campuses

PLAN

- Build 3 elementaries*
- Build 3 intermediates*
- Build 1 middle school
- Renovations throughout remaining buildings

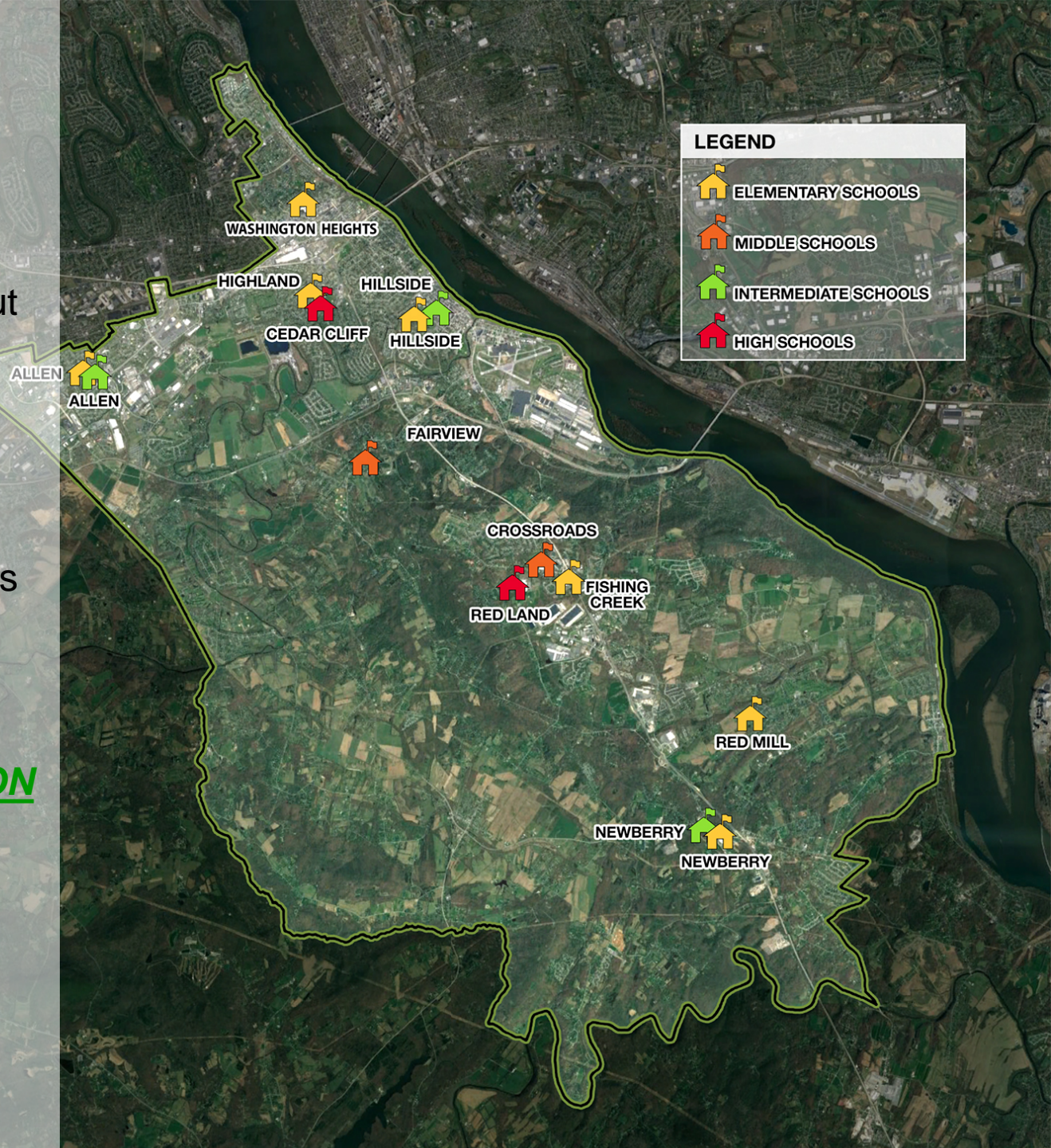
BUILDING QUANTITY

- 7* Elementary Schools
- 3* Intermediate Schools
- 2 Middle Schools
- 2 High Schools

*Campus Concepts

GRADE CONFIGURATION

- E.S. = K-3
- I.S. = 4-6
- M.S. = 7-8
- H.S. = 9-12



OPTION 3: Campuses

BUILDING SUMMARY		SCHOOL	GRADES	CAPACITY	ENROLL- MENT	LEVEL OF NEED
Option 3 - 14 schools* (campus concept - 12 buildings)						
1 2 3 4	Build 3 elementary schools	Fairview ES	Close	0	0	-
	Build 3 intermediate schools	Fishing Creek ES	Close	0	0	-
	Build 1 middle school	New ES @ Fishing Creek	K-3	368	330	HIGH
	Renovate throughout remaining buildings	Highland ES	K-3	368	307	LOW
		Hillside ES	K-3	460	396	LOW
		Lower Allen ES	Close	0	0	-
		Newberry ES	Close	0	0	-
		New ES @ Newberry*	K-3	368	328	HIGH
		Red Mill ES	K-3	552	414	MEDIUM
		Rossmoyne ES	close	0	0	-
		New ES @ Allen MS*	K-3	368	271	HIGH
		Washington Heights ES	K-3	276	237	LOW
				K-3 Capacity	2,760	2,283
	Grade Configuration		New IS @ Hillside	4-6	624	546
7 schools	E.S. (K-3); 2,370 proj. enrollment	New IS @ Allen MS*	4-6	780	656	HIGH
3 schools	I.S. (4-6); 1,787 proj. enrollment	New IS @ Newberry*	4-6	624	590	HIGH
2 school	M.S. (7-8); 1,319 proj. enrollment	4-6 Capacity		2,028	1,792	
2 schools	H.S. (9-12); 2,632 proj. enrollment	Crossroads MS	7-8	646	553	LOW
		Lemoyne Middle	-	0	0	-
		New Cumberland Middle	Close	0	0	-
		New MS @ Fairview	7-8	724	652	HIGH
		7-8 Capacity		1,370	1,205	
		Cedar Cliff High	9-12	1,580	1,167	LOW
		Red Land High	9-12	1,490	1,224	LOW
		9-12 Capacity		3,070	2,391	
			TOTAL	9,228	7,671	

OPTION 3: Campuses

PROS

- Smaller elementary schools
- Can easily accommodate full day KG
- Creates 21st century learning spaces
- Creates one middle school per high school which should help support academic and extracurricular programs
- Creates campus at 3 sites (Newberry, Hillside, Allen)
- Eliminates 2 buildings
- Space available at RM, NB and Crossroads for any population growth in South end of the District

CONS

- More transitions for students
- Large construction projects: each K-6 houses a total of 1000+ students
- Aggregates many younger students in one location
- Current administration would be short 1 Principal and 1 AP
- Phasing challenges
- Continues programmatic challenges with 2 high schools

OPTION 4: Modify

PLAN

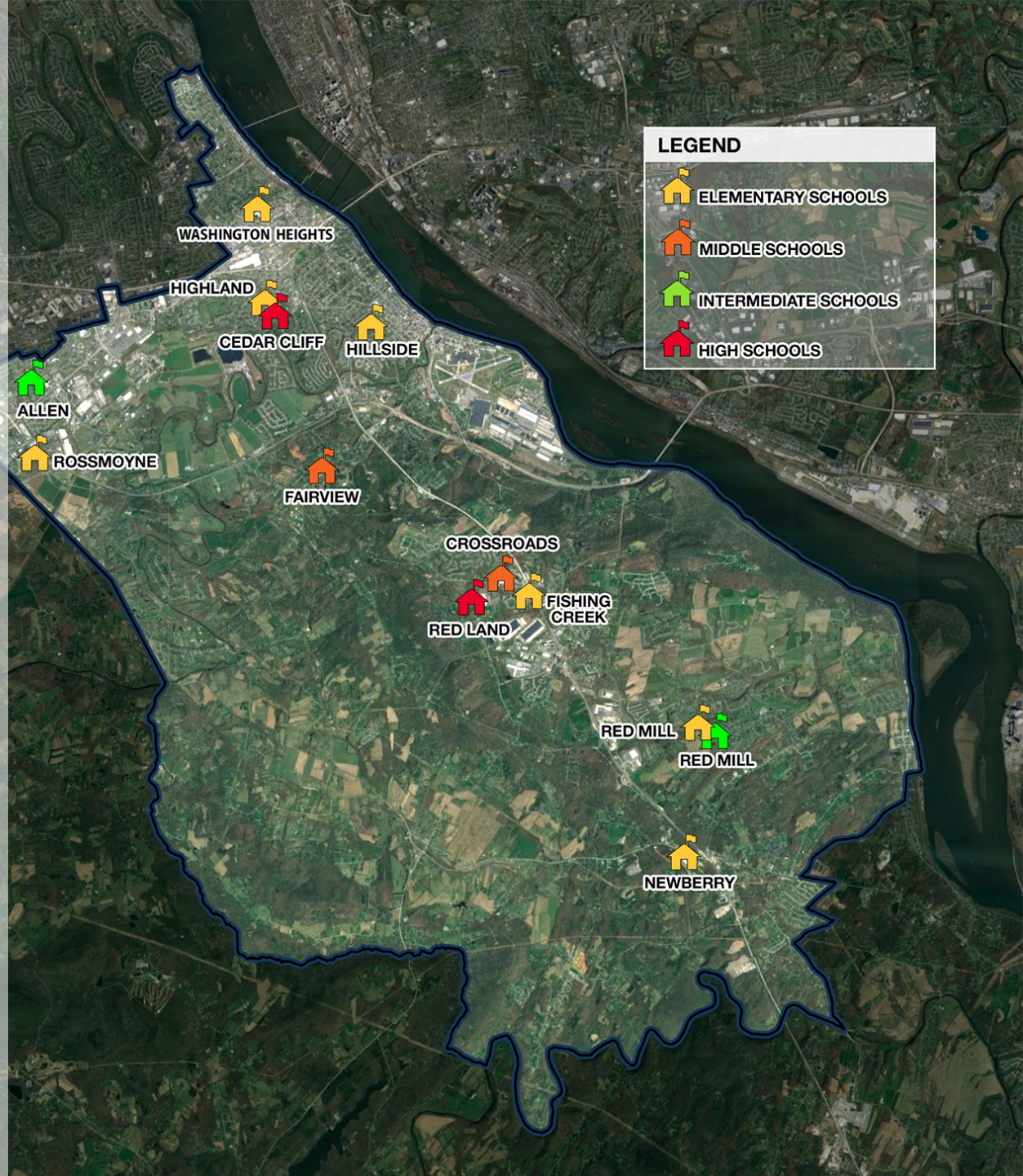
- Build 3 elementaries
- Build 1 intermediate
- Build 1 middle school
- Add/ Renov. to Allen MS
- Renovations throughout remaining buildings

BUILDING QUANTITY

- 7 Elementary Schools
- 2 Intermediate Schools
- 2 Middle Schools
- 2 High Schools

GRADE CONFIGURATION

- E.S. = K-4
- I.S. = 5-6
- M.S. = 7-8
- H.S. = 9-12



OPTION 4: Modify

BUILDING SUMMARY		SCHOOL	GRADES	CAPACITY	ENROLL- MENT	LEVEL OF NEED
Option 4 - 13 schools						
1 Build 3 elementary schools 2 Build 1 intermediate school 3 Additions/ Renovations at Allen MS 4 Build 1 new middle school 5 Renovate throughout remaining buildings		Fairview ES	Close	0	0	-
		Fishing Creek ES	Close	0	0	-
		New ES @ Fishing Creek	K-4	460	428	HIGH
		Highland ES	K-4	460	402	LOW
		Hillside ES	K-4	460	433	LOW
		Lower Allen ES	Close	0	0	-
		Newberry ES	Close	0	0	-
		New ES @ Newberry*	K-4	460	442	HIGH
		Red Mill ES	K-4	575	466	MEDIUM
		Rossmoyne ES	Close	0	0	-
		New ES @ Rossmoyne	K-4	460	366	HIGH
		Washington Heights ES	K-4	345	334	LOW
		K-4 Capacity		3,220	2,871	-
Grade Configuration		New IS @ Red Mill*	5-6	624	569	HIGH
7 schools	E.S. (K-4); 2,982 proj. enrollment	Add/ Renov. @ Allen MS	5-6	728	637	HIGH
2 schools	I.S. (5-6); 1,175 proj. enrollment	5-6 Capacity		1,352	1,206	
2 school	M.S. (7-8); 1,319 proj. enrollment	Crossroads MS	7-8	715	553	MEDIUM
2 schools	H.S. (9-12); 2,632proj. enrollment	Lemoyne Middle	-	0	0	-
		New Cumberland Middle	Close	0	0	-
		New MS @ Fairview	7-8	724	652	HIGH
		7-8 Capacity		1,439	1,205	
		Cedar Cliff High	9-12	1,580	1,224	LOW
		Red Land High	9-12	1,490	1,167	LOW
		9-12 Capacity		3,070	2,391	
			TOTAL	9,081	7,673	

OPTION 4: Modify

PROS

- Moderate sized elementary schools
- Can easily accommodate full day kindergarten
- Creates 21st century learning spaces
- Creates one middle school per high school which should help support academic and extracurricular programs
- Space available at Red Mill and Crossroads for any population growth in South end of the District
- Smaller more manageable construction projects

CONS

- More transitions for students
- Least amount of consolidation with only 1 building eliminated
- Current administration would be short 1 Principal and 1 AP
- Phasing challenges
- Continues programmatic challenges with 2 high schools
- Largest amount of new construction

OPTION 5: Consolidate

PLAN

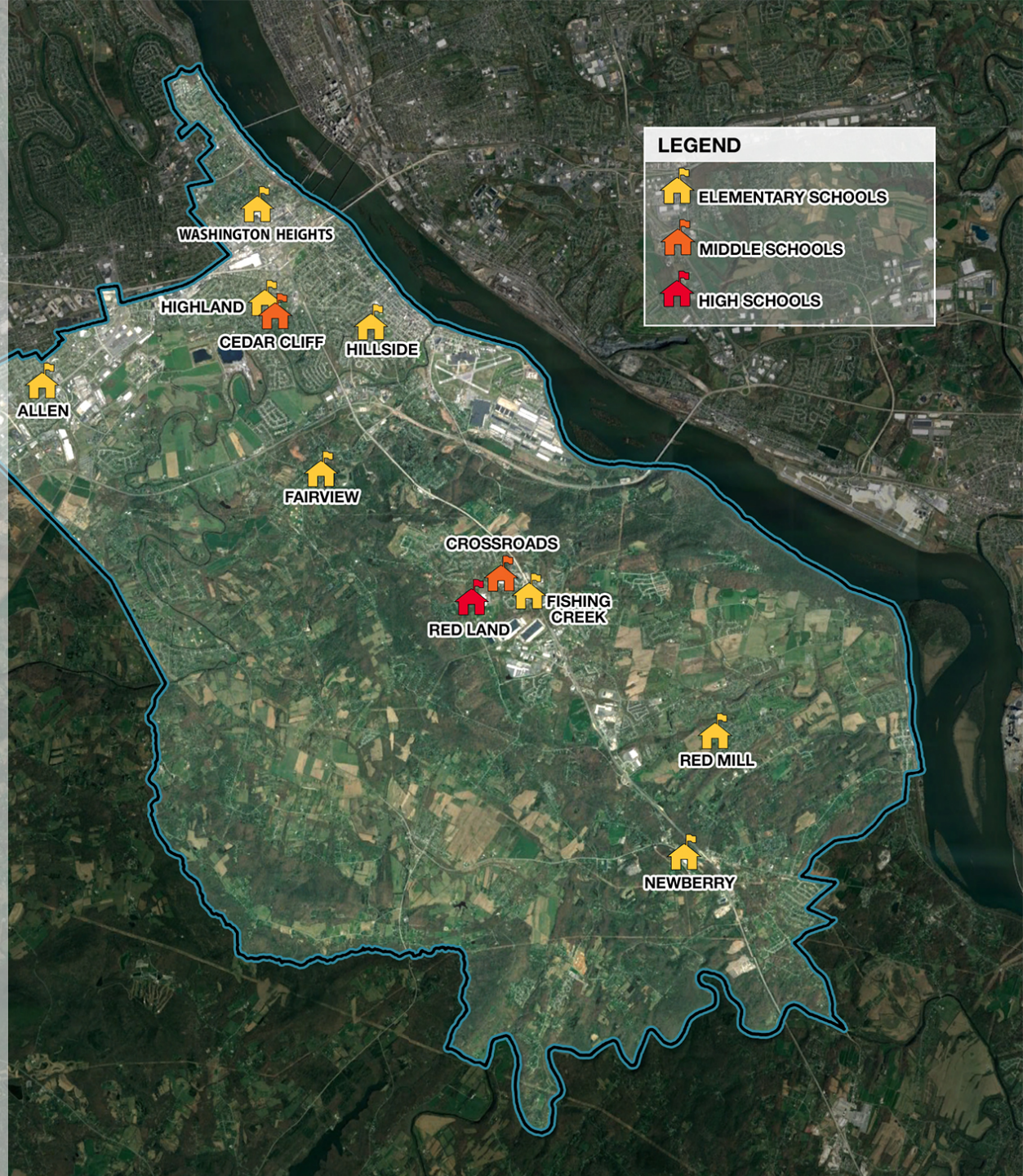
- Build 3 elementaries
- Convert Allen MS
- Renovate Crossroads MS
- Convert Cedar Cliff HS
- Add/ Renov. Red Land
- Renovations throughout remaining buildings

BUILDING QUANTITY

- 8 Elementary Schools
- 2 Middle Schools
- 1 High School

GRADE CONFIGURATION

- E.S. = K-5
- M.S. = 6-8
- H.S. = 9-12



OPTION 5: Consolidate

BUILDING SUMMARY		SCHOOL	GRADES	CAPACITY	ENROLL- MENT	LEVEL OF NEED
Option 5 - 11 schools						
1 Build 3 elementary schools 2 Renovate Allen to ES 3 Add/ Renov. To Crossroad MS 4 Renovate Cedar Cliff to MS 5 Add/ Renov. To Red Land HS 6 Renovate throughout remaining buildings		Fairview ES	Close	0	0	-
		New ES @ Fairview	K-5	552	420	HIGH
		Fishing Creek ES	Close	0	0	-
		New ES @ Fishing Creek	K-5	552	463	HIGH
		Highland ES	K-5	414	385	LOW
		Hillside ES	K-5	552	442	LOW
		Lower Allen ES	Close	0	0	-
		Newberry ES	Close	0	0	-
		New ES @ Newberry*	K-5	552	493	HIGH
		Red Mill ES	K-5	552	484	MEDIUM
		Rossmoyne ES	Close	0	0	-
		Washington Heights ES	K-5	414	393	LOW
		Renovate Allen MS	K-5	552	384	HIGH
Grade Configuration		K-5 Capacity		4,140	3,464	
8 schools	E.S. (K-5); 3,597 proj. enrollment	Lemoyne Middle	-	0	0	-
2 schools	M.S. (6-8); 1,879 proj. enrollment	New Cumberland Middle	Close	0	0	-
1 school	H.S. (9-12); 2,632 proj. enrollment	Cedar Cliff High	6-8	1,260	977	MEDIUM
		Renovate Crossroads MS	6-8	880	843	MEDIUM
		6-8 Capacity		2,140	1,820	
		Red Land High School	9-12	2,640	2,404	HIGH
		9-12 Capacity		2,640	2,404	
			TOTAL	8,920	7,688	

OPTION 5: Consolidate

PROS

- Moderate sized elementary schools
- Accommodates full day kindergarten
- Creates 21st century learning spaces
- 2 smaller middle schools support academic & extracurricular programs
- Space available at Red Mill and Crossroads for any population growth in South end of the District
- Least amount of new construction
- Buildings can be staffed with current administration
- Limits amount of transitions
- Eliminates 3 buildings
- Creates instructional efficiencies for all secondary programs
- Could allow the expansion of high school extra-curricular offerings

CONS

- Massive amount of renovations needed
- Phasing challenges
- Could limit extracurricular opportunities in existing programs
- Facilities at Cedar Cliff and Red Land become wrong sized meaning: gymnasiums, auditoriums and cafeterias - all renovated in 2011 - are larger than required (CC) or much smaller than required (RL) to support the student population
- Huge traffic concerns as the number of students at secondary level accessing Fishing Creek Rd more than doubles
- Committee would have preferred considering this option on a property we do not own and may not even be available



VI.

NEXT STEPS

our promise
a passion for
architecture

our values
integrity,
empathy and
creativity

our mission
listen, create,
serve